

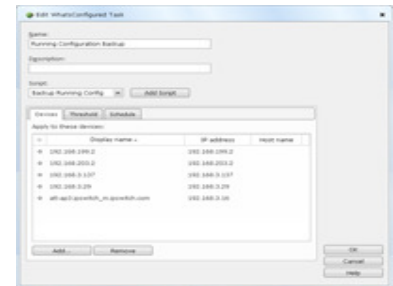
WhatsConfigured Features

Network Configuration and Change Management

A fully integrated network configuration and change management plug-in, WhatsConfigured is accessible from both the WhatsUp Gold Web and Windows consoles. WhatsConfigured is supported across all WhatsUp Gold editions (Standard, Premium, Distributed and MSP).

WhatsConfigured Configuration Capabilities

- Secure access to network devices based on industry standard SNMP v1-3, SSH and Telnet protocols
- Download and storage of unlimited versions of configuration files for each network device
- Secure storage of password and authentication credentials for each network device
- Allows manual selection, viewing and comparison of network device configuration files through the Whatsup Gold console
- Uses the WhatsUp Gold workspace, reporting and Alert Center functionality for integrated network management
- Communicates status of WhatsConfigured application via system log reports
- Broad and diverse vendor support including devices from Cisco, Juniper, HP, Dell, Foundry, Extreme and others



Change Management Capabilities

- Runs scheduled (daily, weekly, monthly, yearly or custom) or on-demand tasks; including backup and restore of startup and running device configurations
- Manages and update passwords across individual devices or device groups, on a scheduled or on-demand basis
- Alerts when a device configuration file changes, downloads the running configuration file and initiates automatic comparison with stored configuration files to highlight differences and speed up operational response
- Alerts when the configuration backup task fails to run on a device or when a scheduled or scripted configuration task fails to execute
- Enables the deployment of customized task scripts to carry out both manual and automated action following a configuration change, e.g. rebooting a device once the configuration file has been updated
- Logs all device configuration events including file changed and time of change, for audit and control purposes



Extensive Multi-Vendor Support

WhatsConfigured supports the download and upload of configuration files from a number of vendors.